

# MPCA Stormwater Research: Understanding Stormwater Contaminants and BMP Performance



# MPCA Stormwater Research: Overview

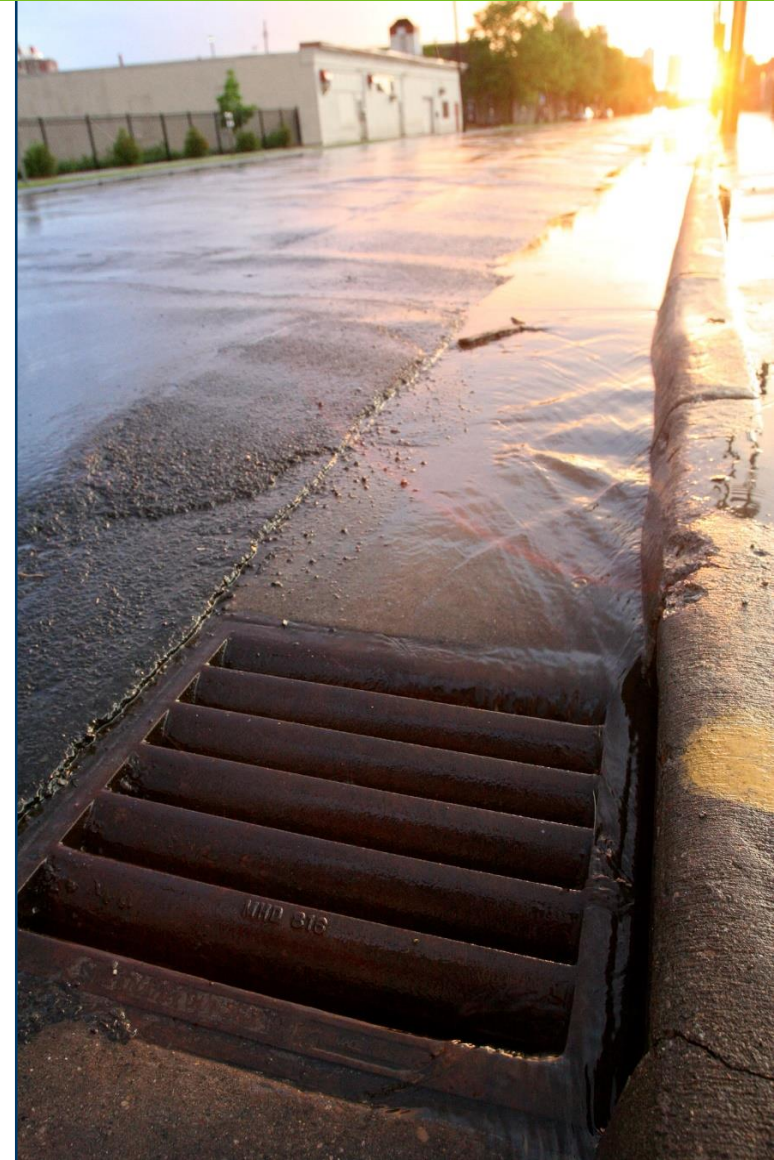
## MPCA Mission

*“Protect and improve the environment and enhance human health”*

- Monitor environmental quality
- Offer technical and financial assistance
- Enforce environmental regulations

## MPCA Stormwater Research

- Research projects
- Review research and monitoring
- Support: MN Stormwater Manual, Program, MPCA programs
- Work with numerous MN entities and purposes



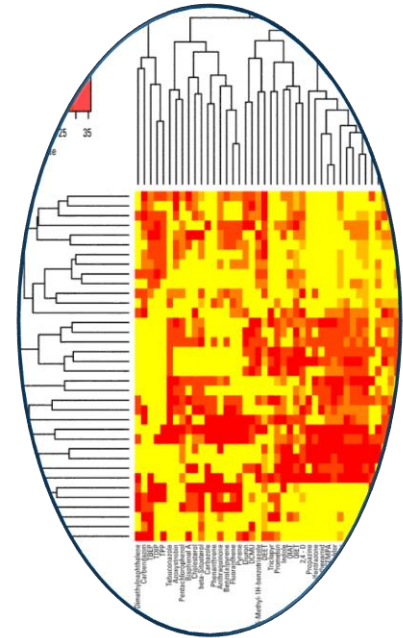
# MPCA Stormwater Research: Approaches & Objectives

## Approaches & Objectives

- **Investigate** essential stormwater research topics
- **Collaborate** in smart partnerships
- **Share** methods and findings
- **Develop** guidance and strategies

## Research Project Activities

- ✓ **Projects:** Design, Partner, Implement, Manage
- ✓ **Field Work and Data Acquisition:** Varies by project
- ✓ **Analysis & Interpretation**
- ✓ **Reporting**



# Research Goals - FY14/15 Funding (CWF)

## ➤ **Many BMPs have WQ benefits...and gaps**

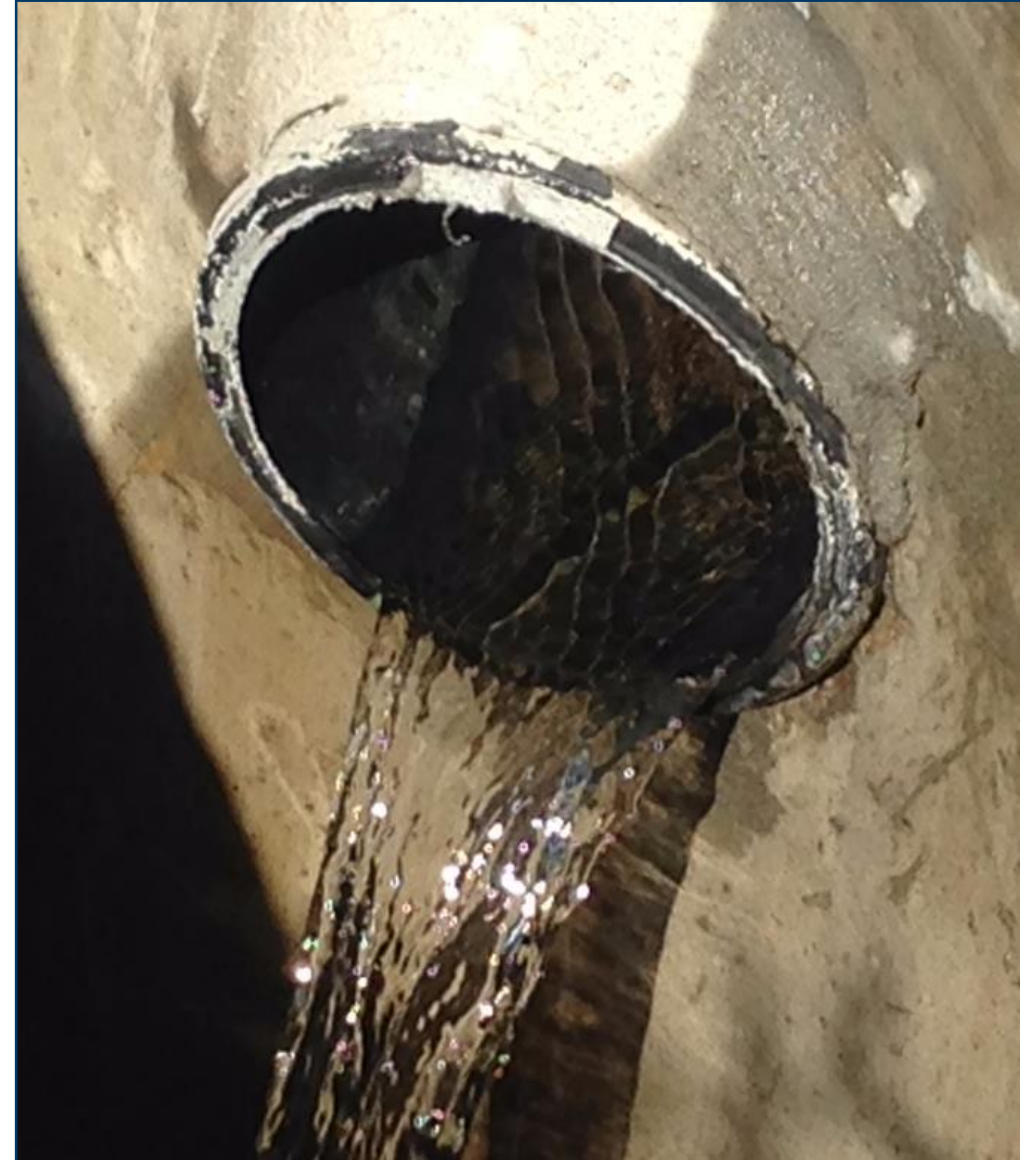
- Contaminant loading, fate/removal, influences
- BMP performance and variability
- Optimized management strategies

## ➤ **Pursued feasible, priority topics**

- Short timeframe to develop
- Identified via several routes:
  - Prior MPCA documentation
  - Lit review
  - Outreach: survey and consults

## ➤ **Funded research projects & objectives**

- **Underground and surface infiltration**
- **Iron-enhanced sand filters**



# Research Goals - FY16/17 Funding (CWF)

- **Extend, expand** FY14/15 research, if prudent
  - Efficient, increased ROI
  - More comprehensive, refined information
- **Additional topics**
- **Funded research projects & objectives**
  - **Underground infiltration** – extended study, added site
  - **Swales**
    - 2-year field-based study
    - Complements recent research and models
- **Extended two IESF projects**



# Infiltration BMP Research Projects (2015-2018)

- **Partners** - multiple projects
  - UMN (Dr. John Nieber, BBE)
  - Capitol Region Watershed District
  - St. Paul Port Authority
- **Sites:**
  - 3 Underground
  - 2 Surface
- **Basis:** few performance data for underground BMPs
- **Goals:** assess contaminant transport in/below BMPs
  - BMP performance
  - Soil treatment zone



# Iron-Enhanced Sand Filter Research (2015-2018)

## ➤ **Partners** – multiple projects:

- Minneapolis/MBPR
- Prior Lake
- Ramsey-Washington Metro Watershed District/Barr Engineering
- CRWD - special study

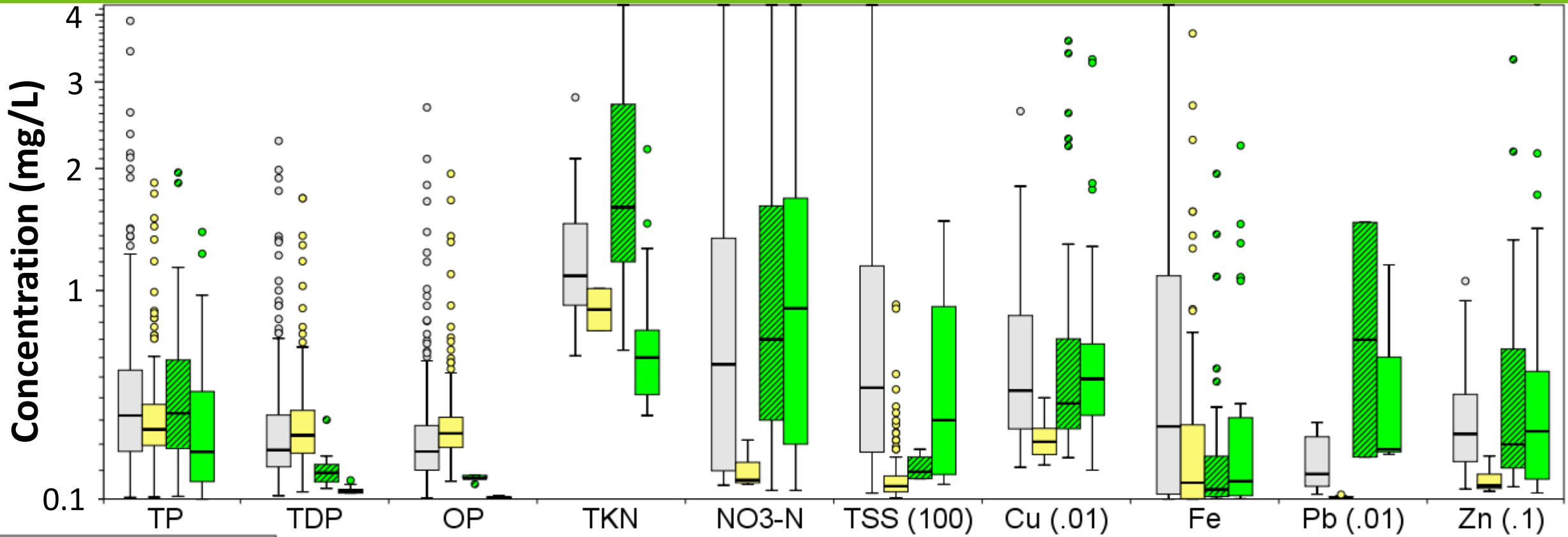
## ➤ **Sites:** 6+ iron-enhanced sand filters

## ➤ **Objectives:**

- Collect field data to support IESF performance meta-analysis
- Update MPCA guidance , if indicated
- Share with practitioners, inform IESF designs and installations
- Primary focus: phosphorus
- Also of interest: metals, bacteria, others



# Selected Analytes across Sampling Points



Sampler Location

- Inlet
- Outlet
- <4' Below Grade
- >4' Below Grade

Water Quality Parameter

**\*NOTE:** This represents currently incomplete datasets, preliminary analysis\*



# Swale Infiltration (Hydrology) Research (2016-2019)

- **Fall 2016: prototype** site implemented
  - Partner: MnDOT
  - Site: MnROAD research facility
- **Summer 2017: full-scale project** implemented
  - 4 new sites: 94, 212, TH8, MnROAD
  - Added partners: Wenck, Barr
  - Enhanced methods
- **Design: water balance** at several large swales
- **Goals:**
  - **Estimate infiltration performance** of swales
  - **Compare** with existing estimation methods
  - **Inform** crediting and guidance

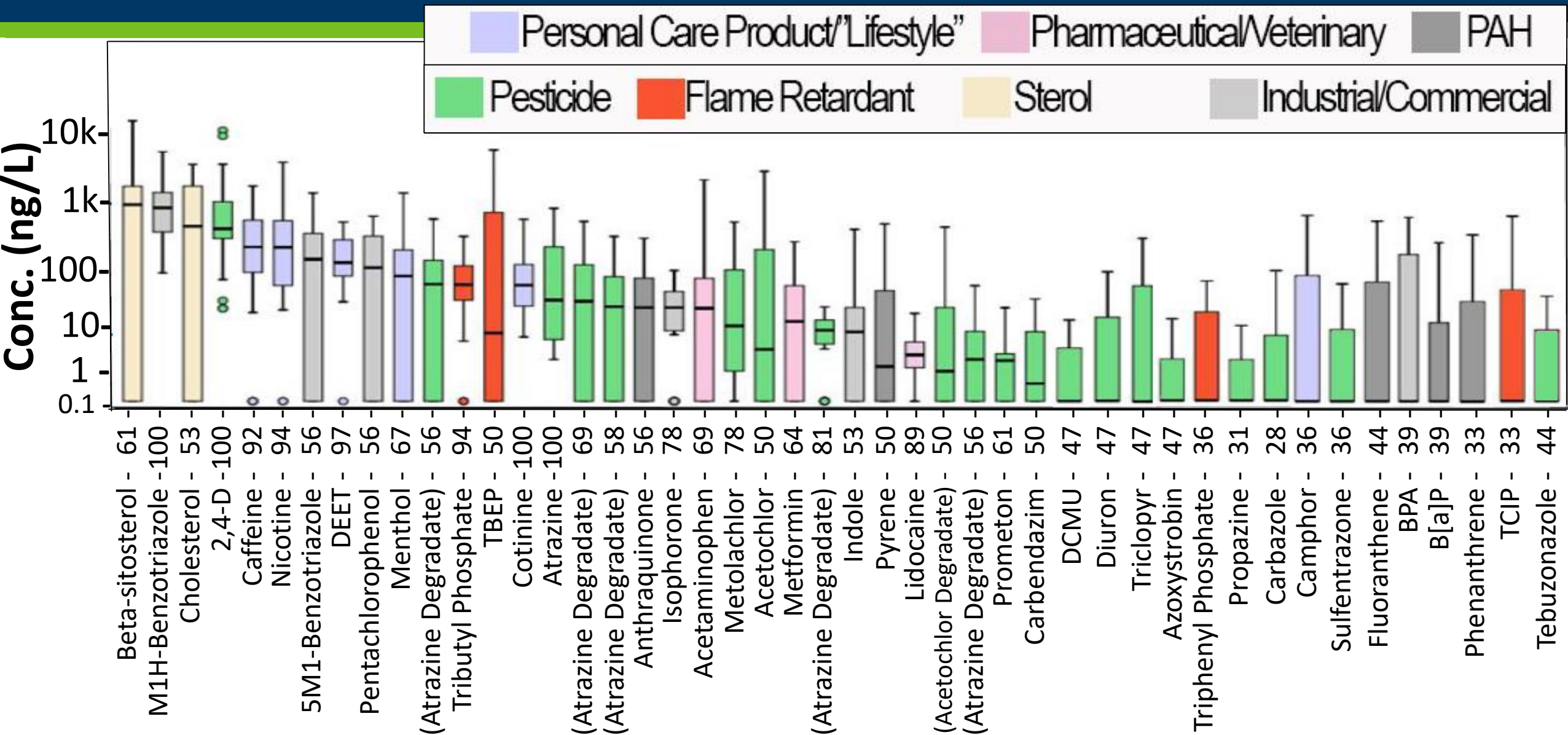


# Stormwater Characterization and BMP Performance: Emerging Contaminants & Ecotoxicology (2016-2017)

- **Funding:** EPA 106d; MPCA CEC program (CWF)
- **Partners:** USGS, SCSU, UST, UMN, CRWD, Mpls/MBPR
- **Sites:** 3 large outfalls, 3 IESFs
- **Sampled** 1 snowmelt and 3 seasonal rainfalls
- **Data:**
  - **Chemistry:** 400+ CECs, metals, nutrients, chloride
  - **Toxicology:**
    - *Daphnia* and fathead minnow outcomes
    - Differential gene expression (*daphnia*)
    - *In vitro* toxicity



# CECs Frequently Detected in 26 Stormwater Samples (ng/L)



# Summary of Projects Status

Project	Samples To Date	Parameters*	Status/Plan
<b>Underground Inf. - CRWD</b>	<b>2016:</b> 55 Samples <b>2017:</b> Samples tbd	Nutrients, metals, TSS, sVOCs, VOCs, flow	<b>2018:</b> Continue Sampling
<b>IESF – Prior Lake</b>	<b>2017:</b> Samples tbd	Nutrients, metals, TSS, level	<b>2018:</b> Continue Sampling
<b>IESF – RWMWD</b>	<b>2015-16:</b> 84 Samples <b>2017:</b> Samples tbd	Nutrients, metals, TSS, flow D.O., pH, conductivity	<b>2018:</b> Continue Sampling
<b>Swales</b>	<b>2016:</b> Prototype <b>July-Oct 2017:</b> All Sites	Level/flow	<b>2018:</b> Continue Monitoring
<b>IESF – Mpls</b>	<b>2015-16:</b> 344 Samples	Nutrients, metals, TSS, flow	<b>2017:</b> Sampling Completed <b>2017-18:</b> Data analysis
<b>Infiltration – UMN</b>	<b>2015-16:</b> 330 Samples	Nutrients, metals, TPH, major ions, level	<b>2017:</b> Sampling Completed <b>2017-18:</b> Data analysis
<b>CECs/Tox</b>	<b>2016:</b> 36 Samples	CECs, RNA, <i>in vitro</i> , phenotype, metals, ions, flow	<b>2017-2018:</b> Reporting

# Current Directions

- **Complete data** acquisition
- **Aggregation** of relevant data
  - Related studies/data from other sites and organizations
  - Accessible, collaborative format
- **Analysis and reporting** via report(s), Manual, journals, workgroups
- **Collaboration:** continue developing and engaging in partnerships

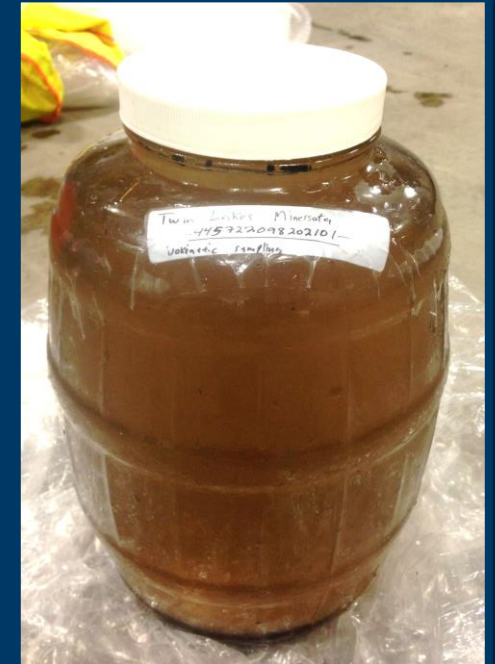


# FIN

**David Fairbairn**

*david.fairbairn@state.mn.us*

651-757-2659



**mn** MINNESOTA POLLUTION CONTROL AGENCY

